

Throughbolts RSPT



DESCRIPTION

The RAWL® Throughbolt range has been developed to meet the changing demands of the market in terms of product approval levels, ease of fixing and product quality.

The versatile through fixing for use in a wide range of applications in concrete of 20N/mm² and over.

Available in: Zinc plated steel, Hot dip galvanised, Stainless steel grade A4.

Suitable for use in: Concrete.

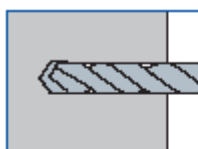
Features

1. Embedment depth markings to ensure correct installation.
2. Cold formed body ensures constant dimensional accuracy.
3. Optimum cone angle for controlled expansion.
4. Tested and approved by the independent UK and international approval bodies.

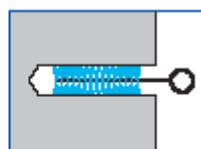
Size Chart

BOLT SIZE/BOLE IN CONCRETE (d) (d _c)	BOLT LENGTH (mm) (l)	WASHER DIAMETER (mm) (w)	THREAD LENGTH (mm) (l _t)	BOLE DIAMETER IN FIXTURE (mm) (d _f)	STANDARD EMBEDMENT		REDUCED EMBEDMENT		REC. TORQUE (Nm) (T _{inst})	PRODUCT CODE		
					MINIMUM BOLE DEPTH (mm) (h _c)	MAXIMUM FIXTURE THICKNESS (mm) (T _{fix})	MINIMUM BOLE DEPTH (mm) (h _c)	MAXIMUM FIXTURE THICKNESS (mm) (T _{fix})		ZINC PLATED	HOT DIP GALVANISED	STAINLESS STEEL GRADE 316 (A4)
M6 6mm	55	12.5	25	6.5	-	-	30	16	5	56-104	*	56-604
	70		50		12	30	32	56-108		*	*	
	85		50		26	30	46	56-110		*	56-610	
M8 8mm	50	17	14	9	-	-	40	5	15	56-114	56-814	*
	65		55		15	40	15	56-116		56-816	56-616	
	80		55		30	40	30	56-120		56-820	56-620	
	95		55		40	40	45	56-122		56-822	*	
	105		55		40	40	55	*		56-824	56-624	
	115		55		50	40	65	56-125		56-825	*	
M10 10mm	65	21	21	11	-	-	50	5	25	56-129	56-829	*
	80		60		7	50	16	56-128		56-828	56-628	
	95		60		22	50	32	56-132		56-832	56-632	
	115		60		42	50	52	56-136		56-836	56-636	
	130		60		57	50	67	56-138		56-838	56-638	
	130		60		57	50	67	56-138		56-838	56-638	
M12 12mm	80	24	30	13	-	-	60	5	45	56-139	56-839	*
	100		80		4	60	24	56-140		56-840	56-640	
	120		80		24	60	44	56-144		56-844	56-644	
	135		80		39	60	58	56-148		56-848	56-648	
	150		80		54	60	75	56-150		56-850	56-650	
	180		80		84	60	105	56-147		56-847	*	
	180		80		84	60	105	56-149		*	*	
	220		80		124	60	145	56-149		*	*	
M16 16mm	90	30	32	18	-	-	50	20	110	56-154	*	*
	105		100		20	80	25	56-153		56-853	56-651	
	140		100		60	80	40	56-152		56-852	56-652	
	180		100		60	80	80	56-156		56-856	56-656	
	220		100		100	80	120	56-158		56-858	56-658	
	220		100		100	80	120	56-158		56-858	56-658	
M20 20mm	125	37	65	22	-	-	100	5	180	56-159	56-859	56-659
	160		120		20	100	40	56-160		56-860	56-660	
	200		120		60	100	80	56-164		56-864	56-664	
	300		120		160	100	180	56-166		*	56-666	
	300		120		160	100	180	56-166		*	56-666	
M24 24mm	180	44	65	26	135	20	120	35	320	56-168	*	*
	260		135		100	120	115	56-172		56-872	56-672	

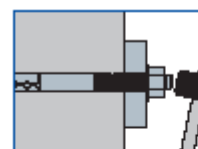
Installation



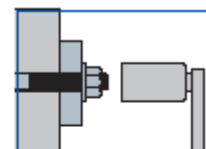
1. Drill a hole of required diameter and depth.



2. Remove debris and thoroughly clean hole with brush and pump.



3. Lightly tap the throughbolt through the fixture into hole with a hammer, until fixing depth is reached.



4. Tighten to the recommended torque.